



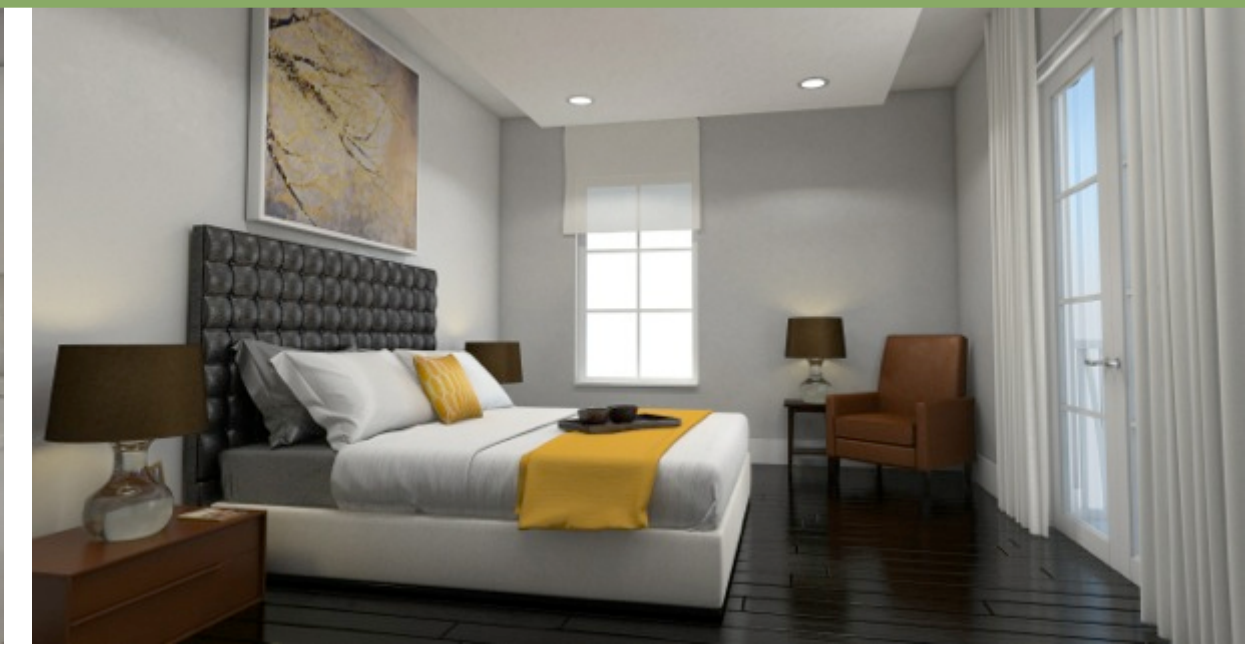
SANTANDER

CORAL GABLES



Shoma Group introduces beautiful living in Coral Gables. Three bedroom luxury townhouses offering intimate interior courtyards, and terraces with a mix of modern and Mediterranean flair only offered in the cities most sought out neighborhood.

# SANTANDER FEATURES



## GOURMET KITCHEN

- ITALIAN CABINETS
- QUARTZ COUNTERTOP AND BACKSPLASH
- PULLOUT FAUCET
- STAINLESS STEEL APPLIANCES
- 42" REFRIGERATOR
- 36" RADIANT COOK TOP
- 30" MICROWAVE/WALL OVEN COMBINATION
- DISHWASHER
- WASTE DISPOSAL
- DUAL COMPARTMENT UNDERMOUNT STAINLESS STEEL SINK

## DISTINCTIVE INTERIOR

- SMOOTH WALLS & CEILINGS THROUGHOUT
- 24"x 24" TRAVERTINE FOR THE FIRST FLOOR
- ENGINEER WOOD FOR THE SECOND FLOOR AND STAIRS
- SECURITY SYSTEM
- FLAT PANEL INTERIOR DOORS WITH CASINGS
- INSULATED 2- CAR GARAGE DOOR WITH AUTOMATIC DOOR OPENER
- SMART CABLE WIRING
- DECORA STYLE LIGHT SWITCHES
- ELECTRIC DOOR CHIME
- PROGRAMMABLE READOUT THERMOSTAT
- 5 1/4 " WOOD BASEBOARDS
- FULL CAPACITY WASHER & DRYER
- ARCHITECTUALLY DESIGNED DROP COFFER CEILINGS

## EXTERIOR FEATURES

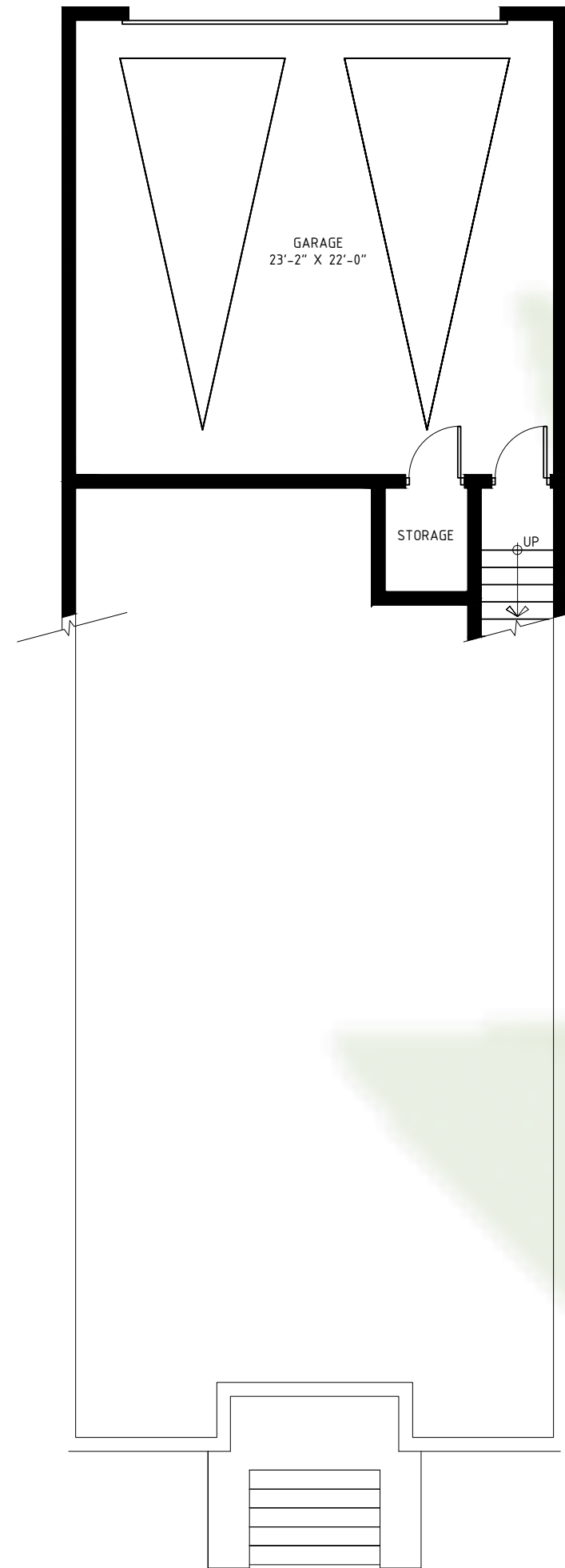
- ACCENTS OF CORAL STONES
- SMOOTH STUCCO FINISH
- CASEMAN IMPACT WINDOWS & CLASS DOORS
- FULLY SODDED & LANDSCAPPED SITE WITH AUTOMATIC SPRINKLER SYSTEM

## ELEGANT BATHROOM

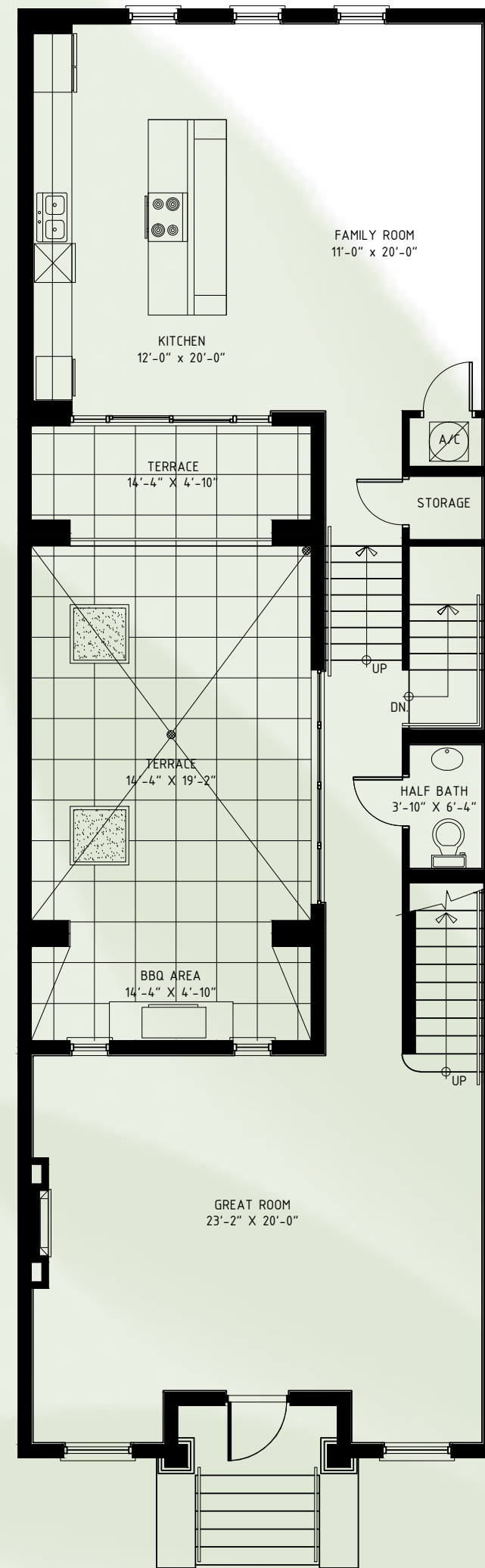
- DESIGNER CABINETS
- MARBLE COUNTERTOPS
- PORCELAIN TILES
- DESIGNER FAUCETS
- DESIGNER FIXTURES
- HIS & HER VANITIES
- FRAMELESS GLASS SHOWER DOOR
- ROMAN TUBS IN ALL MASTER BATHROOMS

## CONSTRUCTION FEATURES

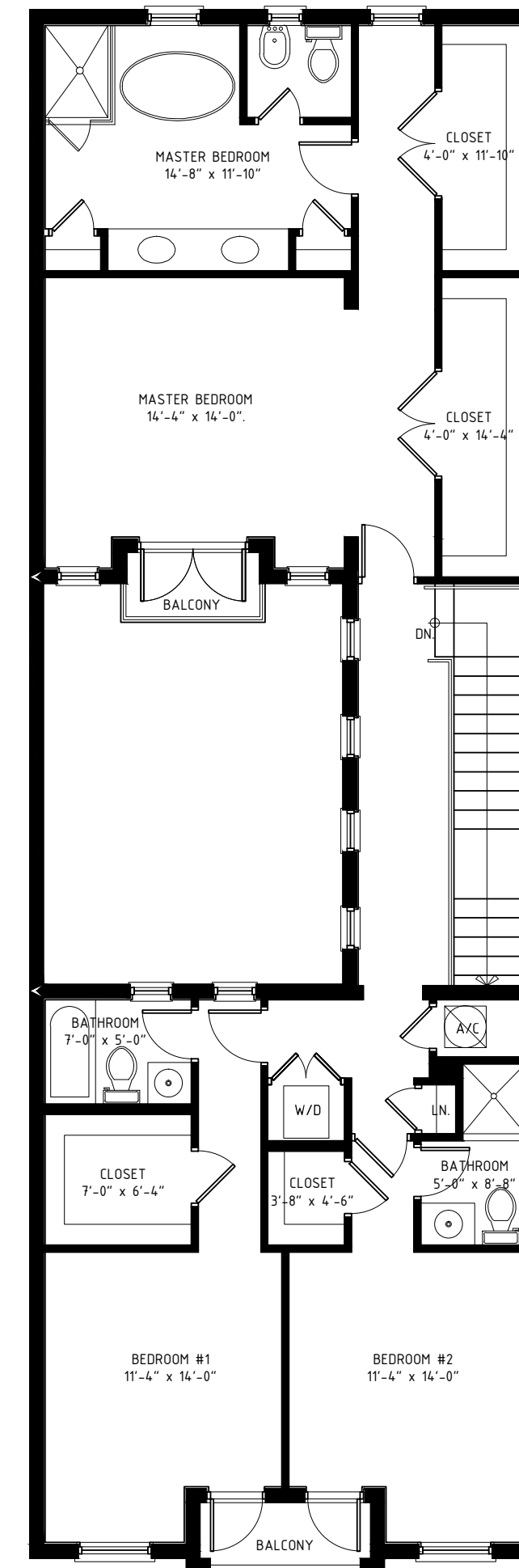
- STEEL REINFORCED MONOLITHIC CONCRETE FOOTINGS
- CONCRETE BLOCK WALLS WITH STEEL REINFORCED
- POURED TIE BEAM CONSTRUCTION
- POURED IN PLACE STEEL REINFORCED ROOF SLAB
- POURED IN PLACE CONCRETE FLOOR AND STAIRS
- HIGH ENERGY EFFICIENT AIR CONDITIONING



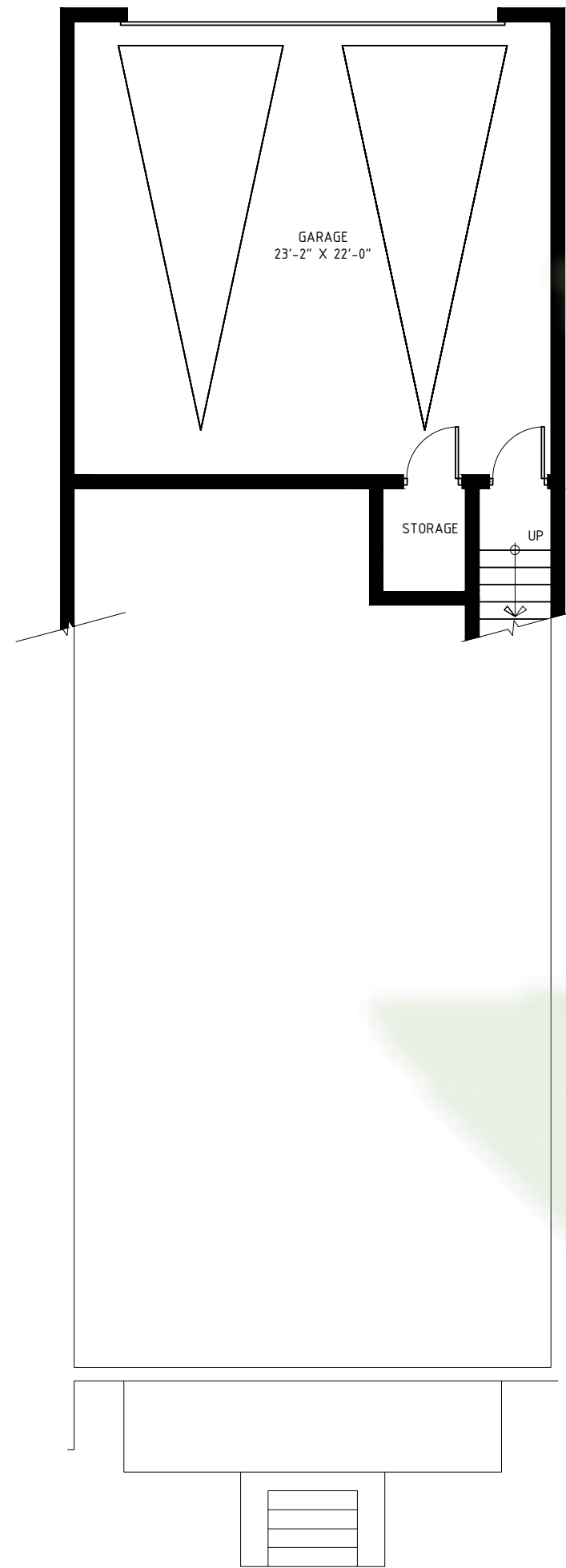
GROUND FLOOR



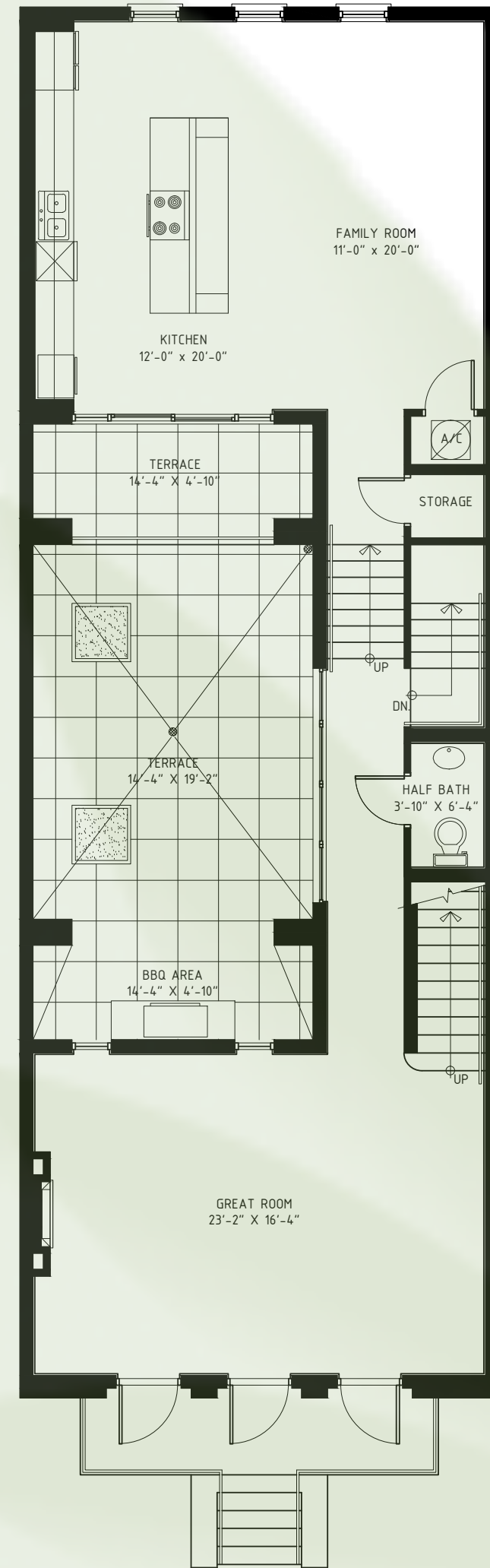
FIRST FLOOR



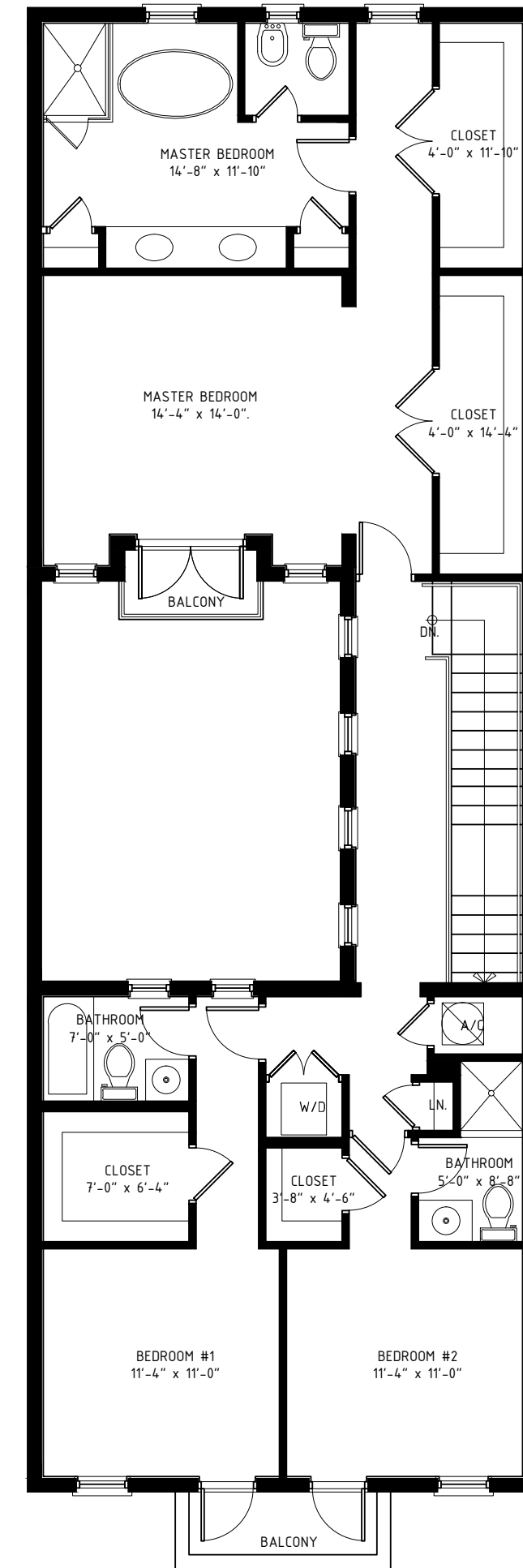
SECOND FLOOR



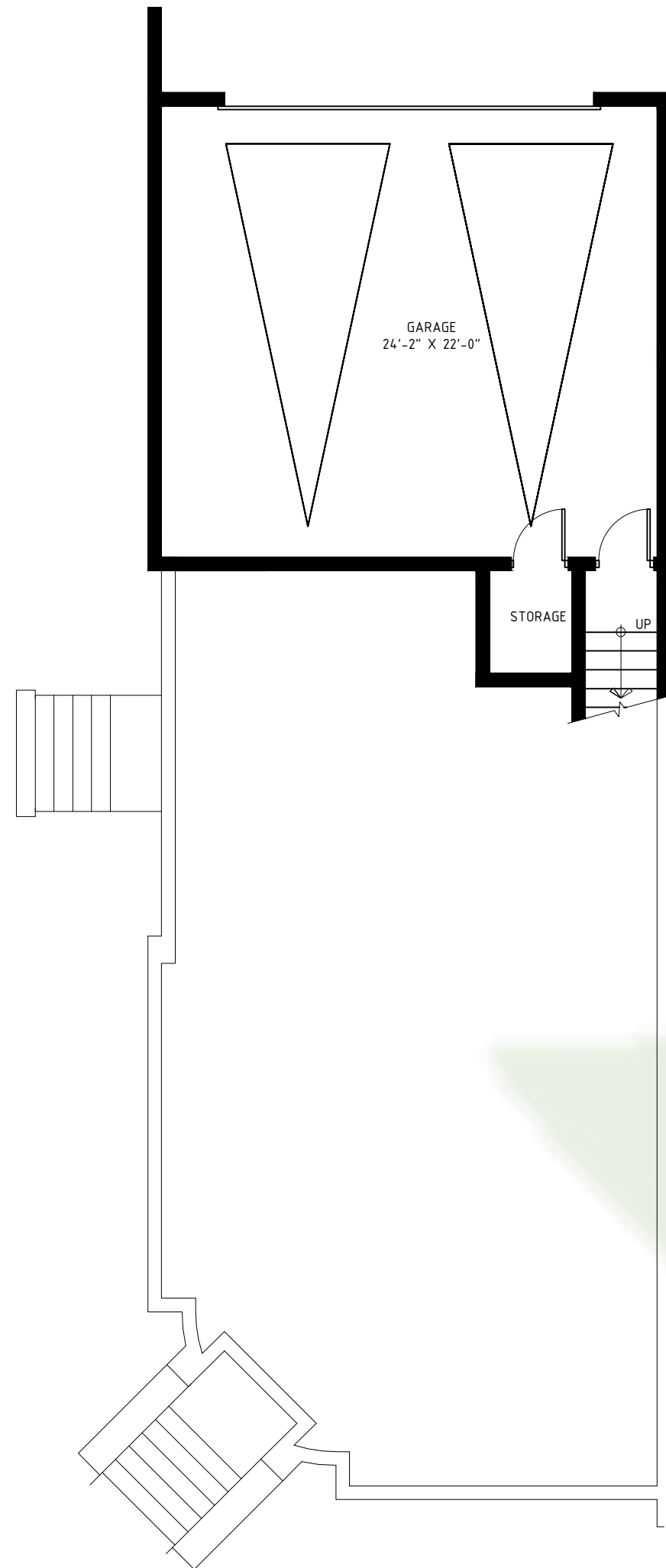
GROUND FLOOR



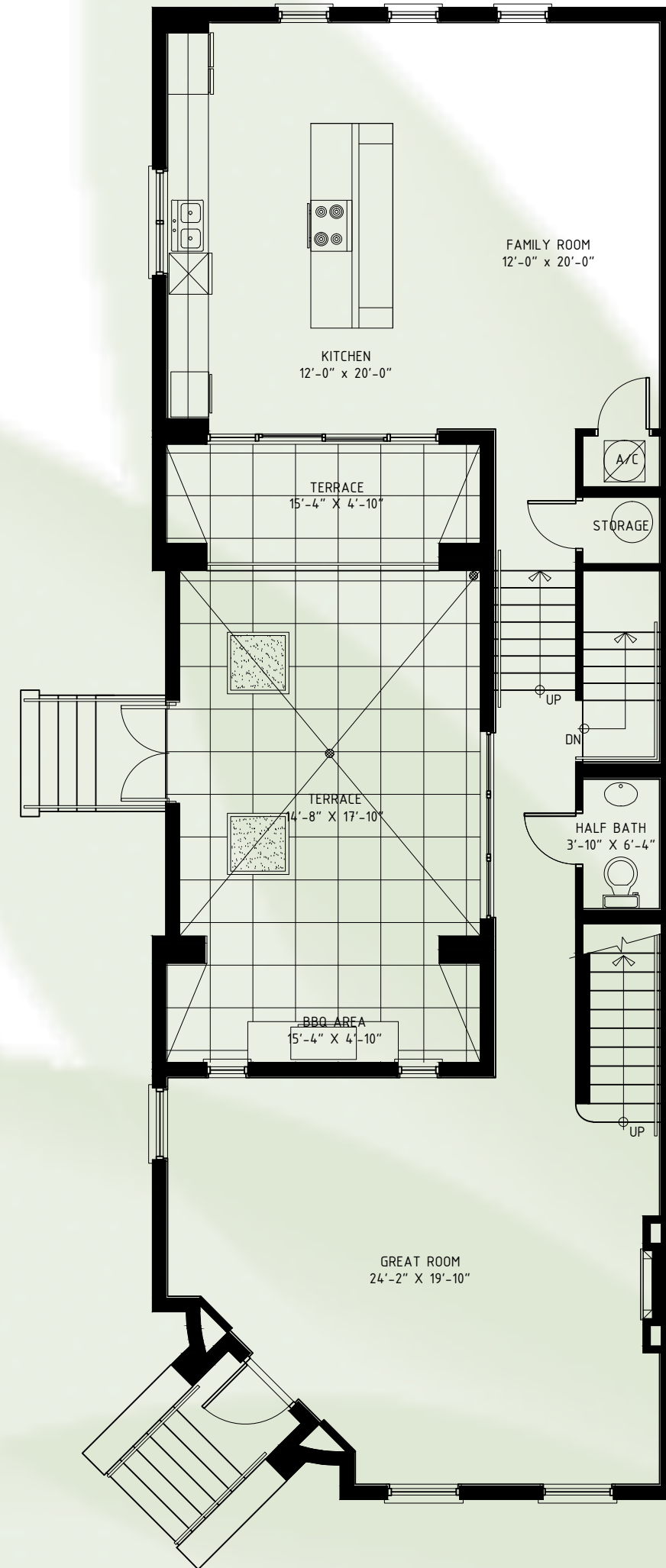
FIRST FLOOR



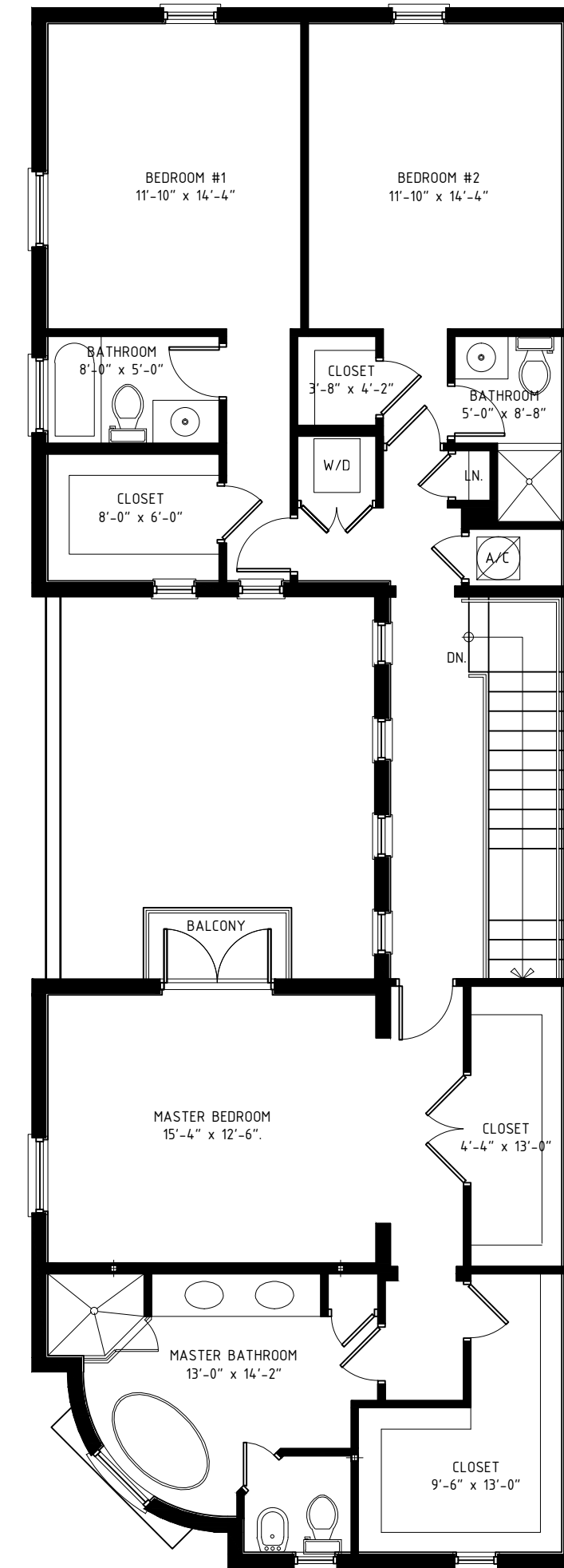
SECOND FLOOR



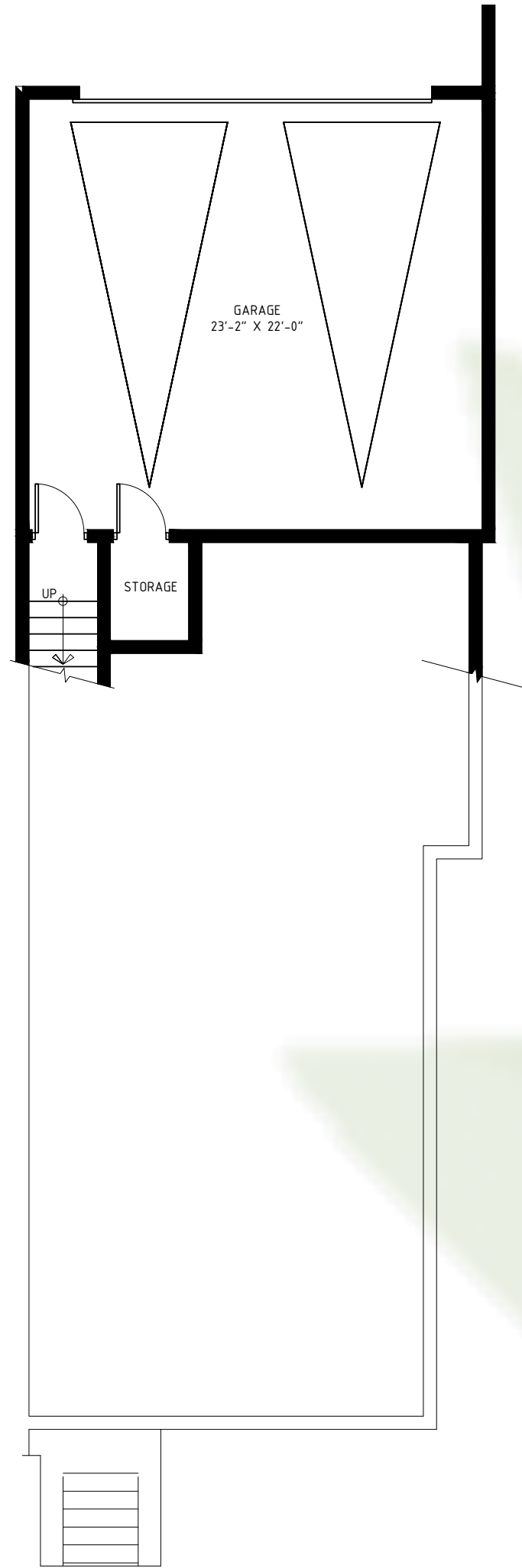
GROUND FLOOR



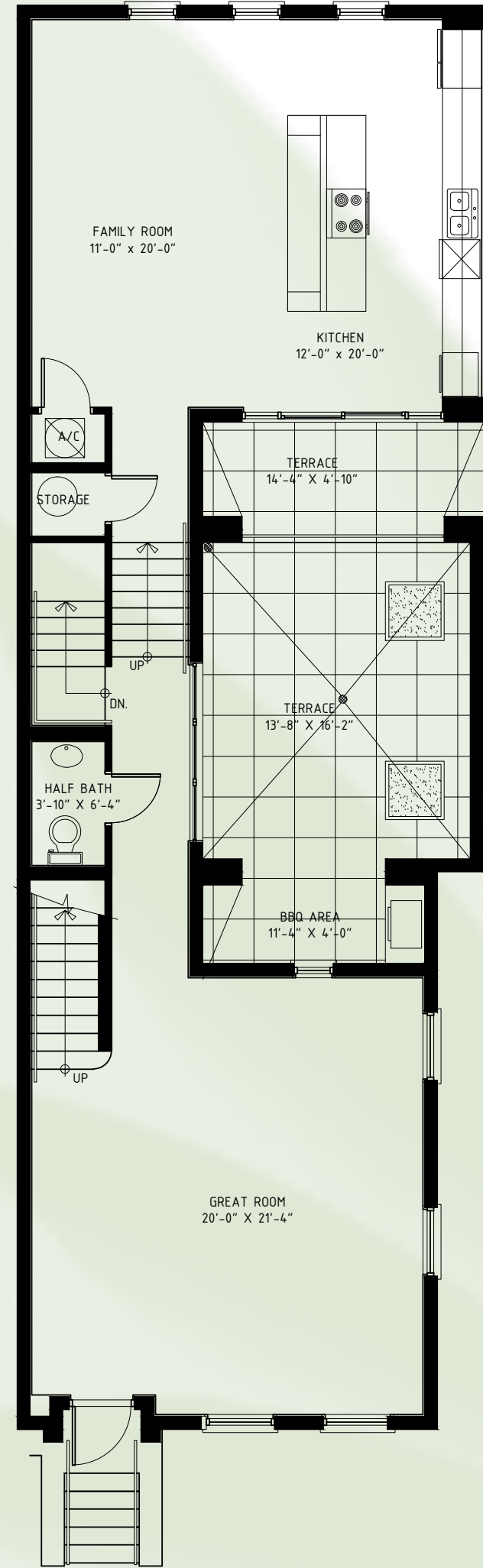
FIRST FLOOR



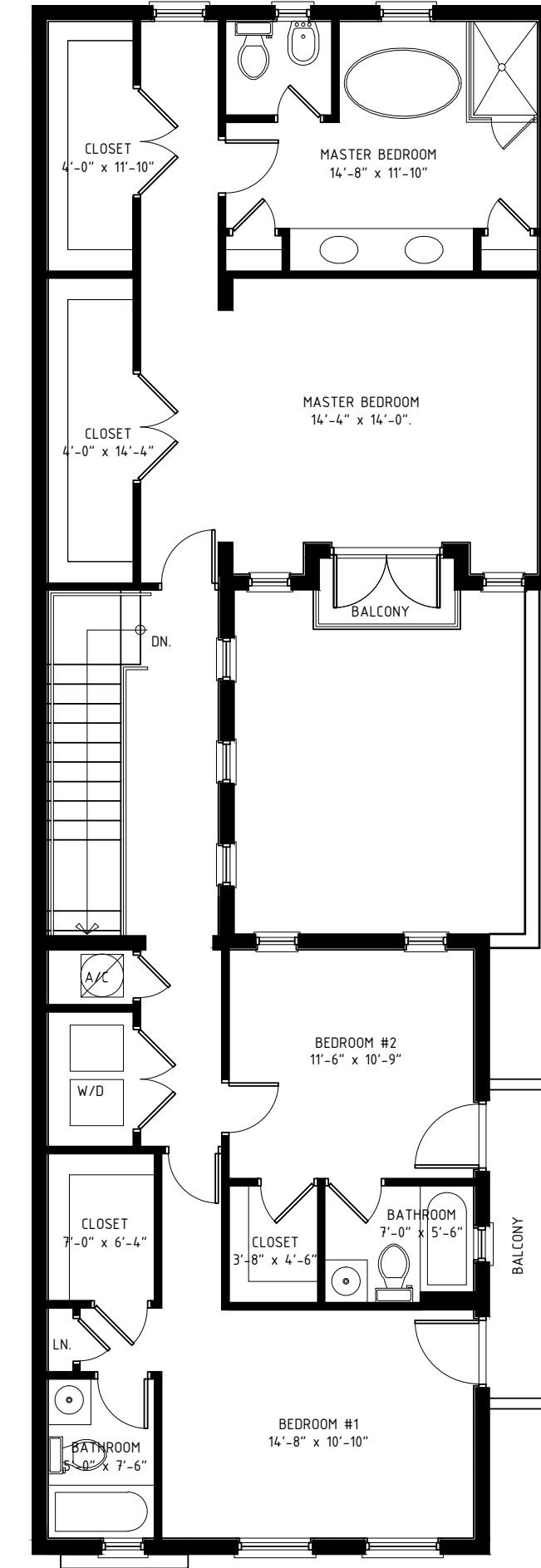
SECOND FLOOR



GROUND FLOOR



FIRST FLOOR



SECOND FLOOR



Sushi Samba  
Coral Gables



Swine  
Miami



Village of Merrick Park



Equinox Gym

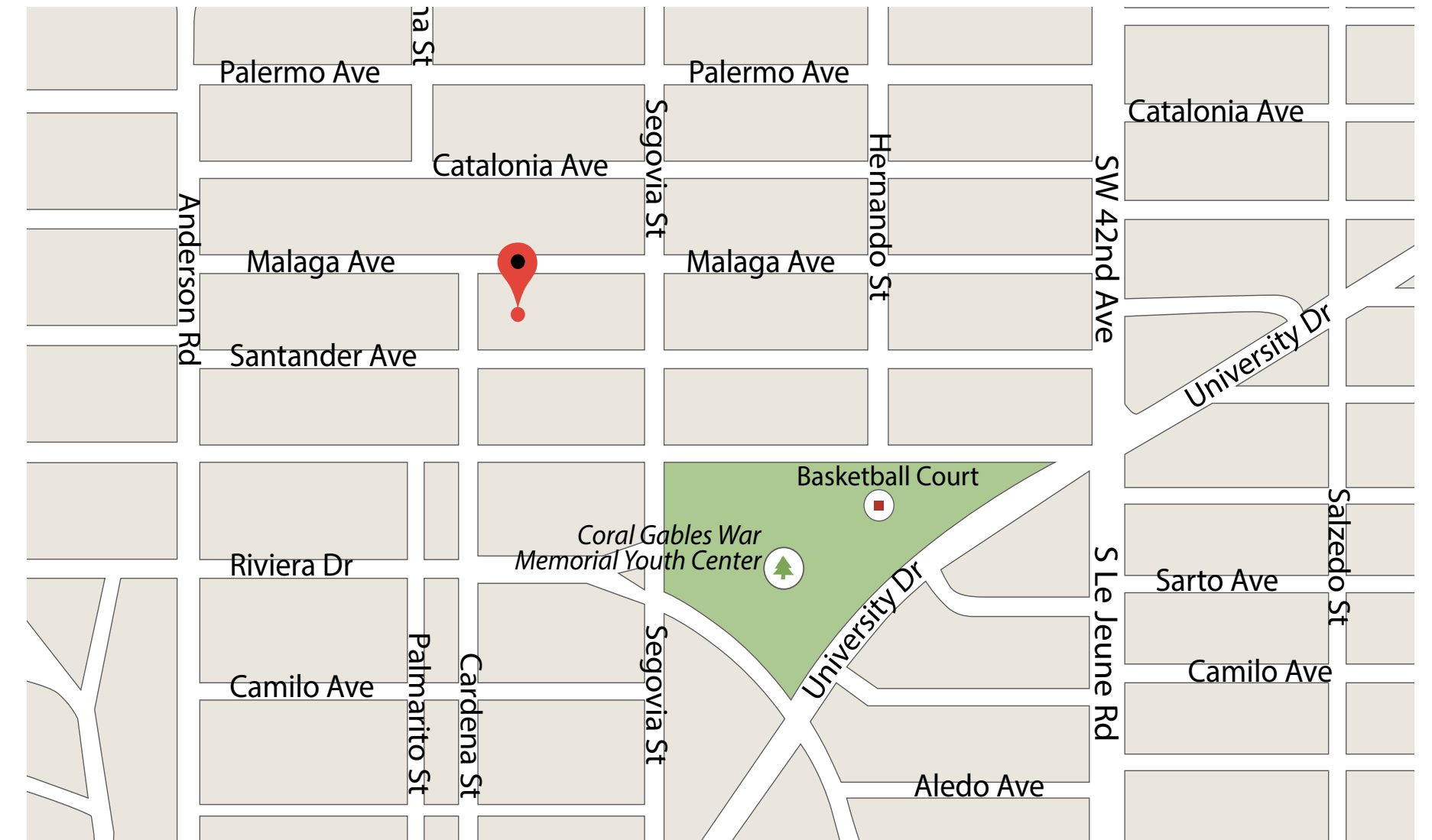


Biltmore Hotel

LIVE ❖ WORK ❖ PLAY

Your choices for entertainment are endless.

# LUXURY TOWNHOUSES IN THE HEART OF CORAL GABLES



Broker participation welcome. Oral representations cannot be relied upon as correctly stating representations of the Developer. For correct representations, make reference to the documents required by Section 718.503 of the Florida Statutes, to be furnished by the Developer to a Buyer or Lessee. Obtain the property report or prospectus required by law and read it before signing anything. This advertisement does not constitute an offer or solicitation where prior registration or other qualification is required. Equal Housing Opportunity. All plans and renderings are conceptual and are subject to change without notice. Images and renderings are all artist conceptual compositions.